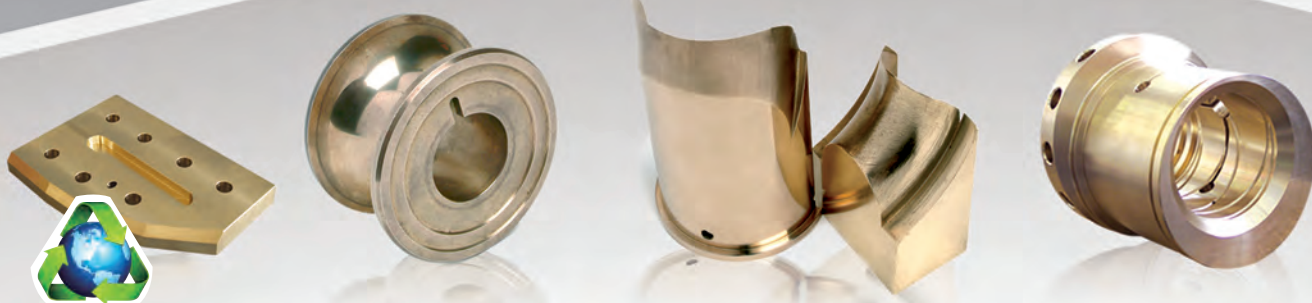
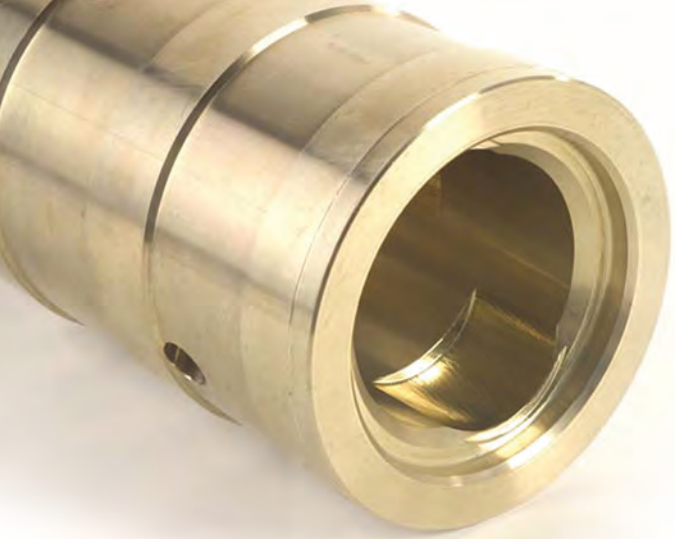


MACHINED PARTS



AMPCO METAL EXCELLENCE IN ENGINEERED ALLOYS



NORTH AMERICA

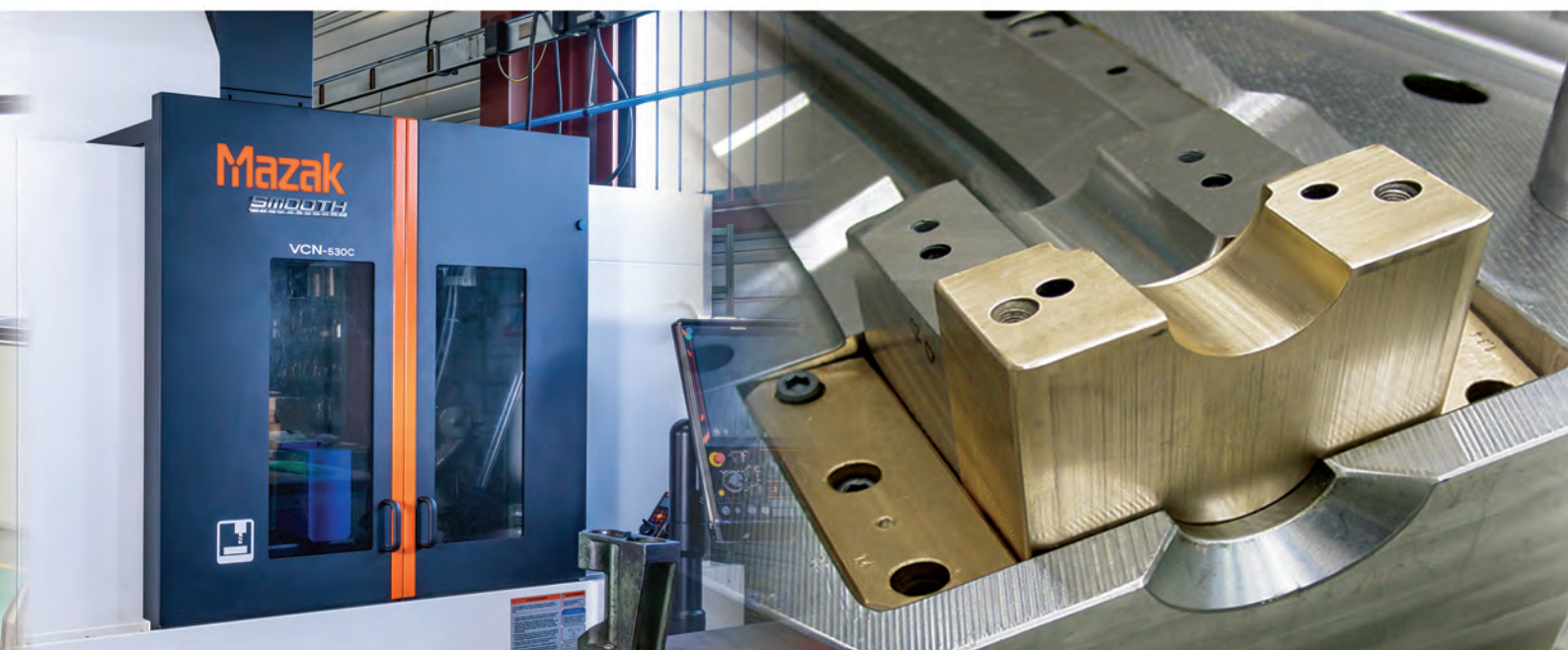
Over a century ago, in 1914, the founders of AMPCO METAL had a vision: They sought to produce a new bronze hard enough to cut steel. Then, on June 6th, 1914, the first AMPCO® Bronze was born. The superior properties of the product led to an overwhelming demand for machining services for our alloys-our finished machined parts business grew exponentially. As a result, today, we are specialized in producing finished machined parts of the utmost quality, used in various industries such as oil & gas, general engineering, and agriculture, among many others. Our extensive inventory paired with our highly skilled machinists enable us to deliver in a short time frame and guarantee to fulfill our customers' high expectations for accuracy and quality. Combined with our competitive prices, this makes AMPCO METAL the ideal partner for machining bronzes and copper alloys in small and medium-size-lots.





EUROPE

In the 1960s, AMPCO METAL started to produce finished machined products in Europe. Since then, we have been supplying various European industries such as steel, die and tooling, and the automotive industry, to list a few. Our two production sites, located in France and Germany, specialize in manufacturing high precision parts made of our superior AMPCO® and AMPCOLOY® alloys and all other standard copper-based alloys for our customers. We use our two to five-axis CNC Machining Centers to guarantee the highest possible quality, beginning at lot size 1 up to medium quantities. In addition, to provide our customers with bigger lots at competitive prices, we are continuously investing in automatic loading systems.



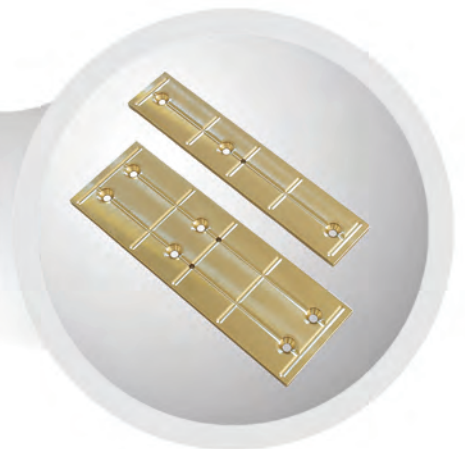


ASIA

Since the early 2000s, AMPCO METAL offers high-quality and affordable CNC-machining services to our loyal customers in Asia. Our experts work closely with your team to design and produce prototypes, small-batch, or mass production parts to guarantee the highest possible quality.

Our Indian and Chinese facilities follow the strictest manufacturing procedures and techniques to ensure our quality is second to none. Before delivery, each part is inspected with our latest state-of-the-art measurement equipment to ensure the utmost accuracy. This way, your final products not only meet the tightest tolerances but are also delivered right on time and within budget.

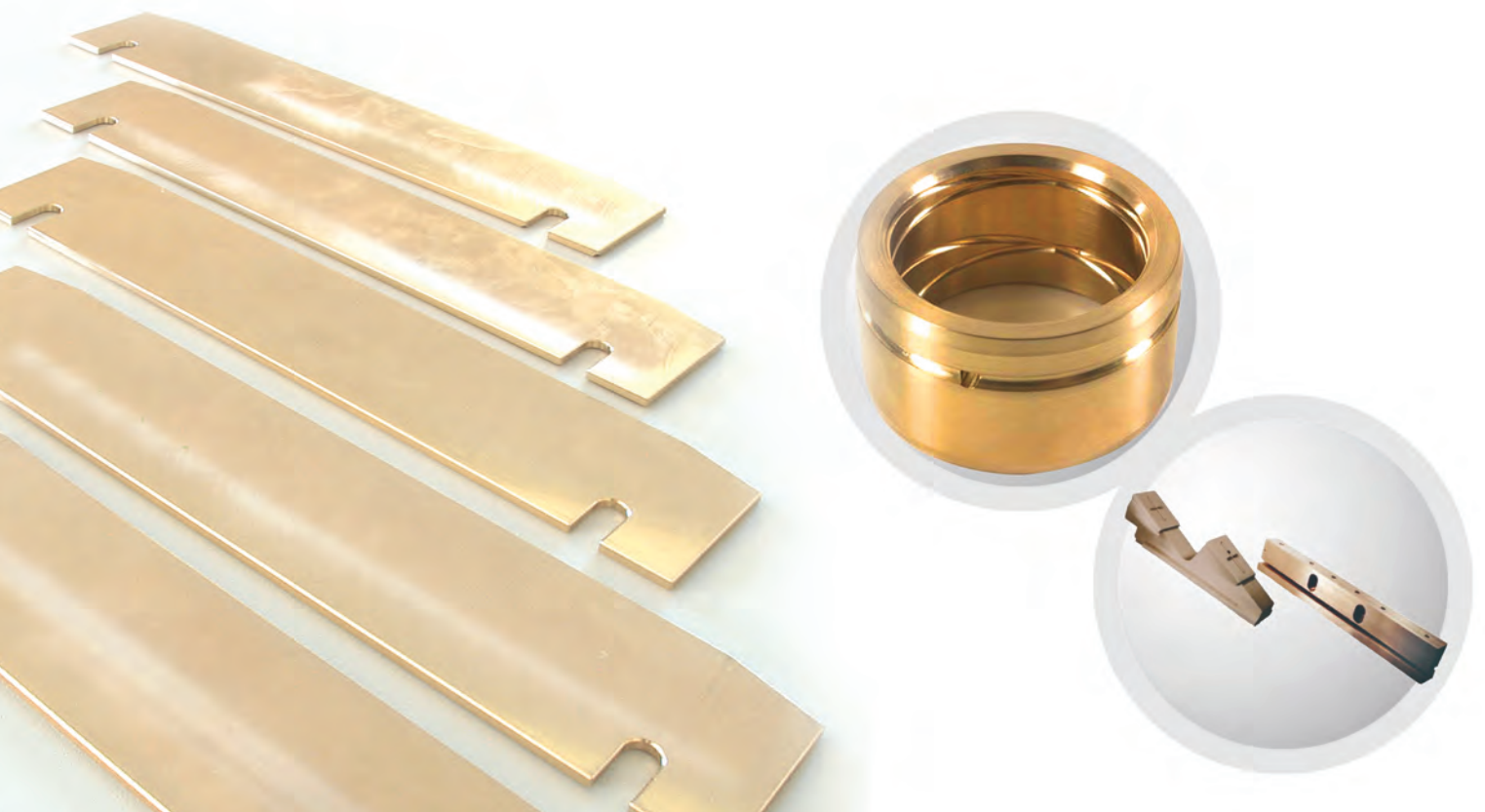
The combination of a highly skilled team and cutting-edge equipment allows us to serve many clients and industries. We are a trusted partner and preferred supplier for customers across Asia in the automobile, aerospace, defense industry, and many more.



MACHINING CAPABILITIES

		Metric [mm]	Imperial [inch]
Sawing	Max. Cutting Range	520 x 380 x 2500	20 x 15 x 100
Turning	Max. Dimensions	Ø 700 x 3000	Ø27,5 x 120
		Ø 1000 x 200	Ø 40 x 8
Milling	Max. X, Y, Z Travel	3000 x 800 x 720	120 x 32 x 28
3-D Milling (5-axis milling)	Max. Dimensions	730 x 850 x 560	28 x 33 x 22
Surface Grinding	Max. Dimensions	1000 x 450 x 100	40 x 18 x 16
Outside Diameter Grinding	Max. Dimensions	Ø 350 x 1000	Ø 14 x 40
Inside Diameter Grinding	Max. Dimensions	Ø 2 - 170, up to length 500	Ø 0,08 - 7, up to length 20
Deep Hole Drilling	Max. Dimensions	Ø 2,5 - 350, up to length 1500	Ø 0,1 - 14, up to length 60
Wire-cut EDM-ing	Max. X, Y, Z Travel	600 x 400 x 310	23 x 16 x 12
Sinker EDM-ing	Max. X, Y, Z Travel	350 x 250 x 270	14 x 10 x 11
Welding	MIG / MAG / WIG, DC & AC Current		
Heat Treatment	Max. Dimensions	1000 x 750 x 400	40 x 30 x 16

* Thickness restrictions might be possible





AMPCO METAL is proud to participate into saving natural resources by using mostly recycled metal!



EUROPE(Headquarters)

AMPCO METAL S.A.
Route de Chésalles 48
P.O.Box 45,1723 Marly
SWITZERLAND
TOLL FREE PHONE: 800 8080 5050
Tel.: + 41 26 439 93 00
Fax: + 41 26 439 93 01
info@ampcometal.com

BRASIL

AMPCO METAL Brasil Ltda.
Rua Dona Francisca 8400 - galpão 2
Zona Industrial Norte
Joinville, SC - 89219 - 600
Tel.: + 55 47 3305 0020
Fax: + 55 47 3305 0021
infobrasil@ampcometal.com

CHINA

AMPCO METAL (Foshan) Co., Ltd
Warehouse 9-1 No 9 Xinyue road
Jinqiao Industrial city, Wusha
Daliang town, Shunde, Foshan
Guangdong Province, P.R.China.
P.C.528333
TOLL FREE PHONE: 4008 899 028
Tel.: + 86 (0) 757 2232 6571
Fax: + 86 (0) 757 2232 6570
infochina@ampcometal.com

INDIA

AMPCO METAL INDIA PVT. LTD.
A-8/4, Village - Nighoje,
Chakan MIDC, Phase IV, Tal : Khed
Pune – 410501, Maharashtra - INDIA
Tel. +91 2135 610 810
Fax. +91 2135 610 811
Infoindia@ampcometal.com

U.S.A

AMPCO METAL Inc.
1221 Grandview Pkwy
Sturtevant, WI 53177
Tel.: +1 800 844 6008
Fax: +1 847 437 6008
infousa@ampcometal.com

www.ampcometal.com